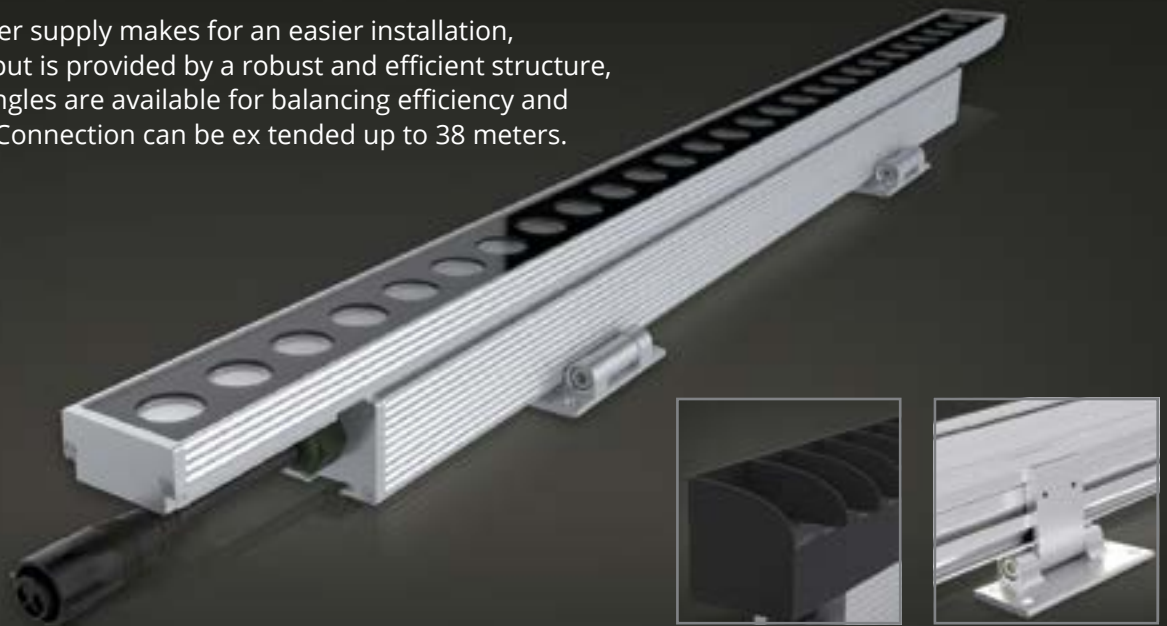


LINEAR PH AC

The built in power supply makes for an easier installation, High lumen output is provided by a robust and efficient structure, Various beam angles are available for balancing efficiency and lighting effects. Connection can be extended up to 38 meters.



SPECIFICATION

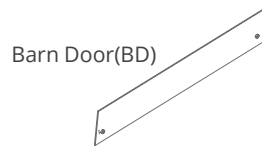
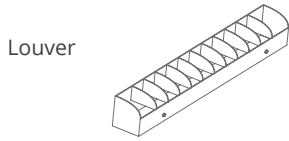
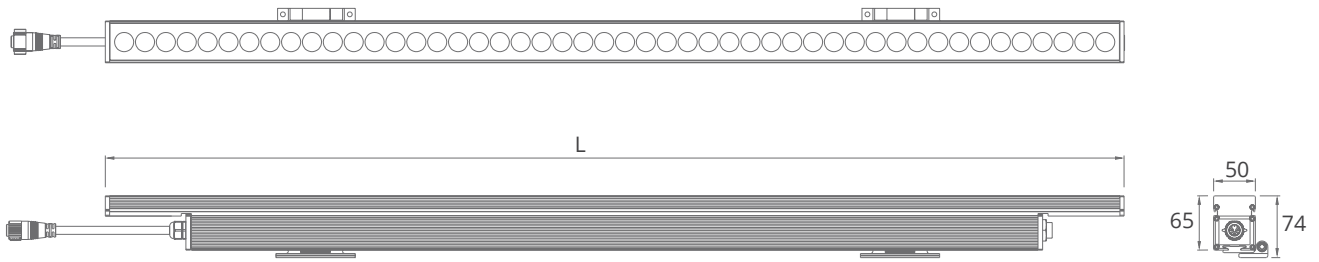
MODEL	HIGH WAVE LINEAR PH AC
OPERATING VOLTAGE	AC 100-240V
POWER CONSUMPTION	16W/320mm, 64W/ 1220mm
LED TYPE	High Power LED
COLOUR TEMP OPTION	2700K, 3000K, 4000K, 5000K, Tunable White, RGB, RGBW
CRI	90min, 80min
PRODUCT EFFICIENCY	75lm/W@3000K
FULL WIDTH AT HALF MAXIMUM (OPTICS)	Tilt 2.5@11°, 6°, 8°*15°, 8°*30°, 8°*50°, 20°*40°, 25°, 45°, 60°
MATERIAL	Aluminum + Tempered Glass
AMBIENT OPERATING TEMPERATURE	-20°C ~ +55°C
LUMEN MAINTENANCE	50,000 hours/L70 at 25°C
DIMENSIONS	1220(L)*50(W)*74(H)mm, 320/620/920mm available
CABLE LENGTH	150mm
CONTROL SYSTEM	ON/OFF, DMXIRDM, TRIAC Dim, 0-10V Dim
MOUNTING TYPE	Surface
IP RATING	IP66

FEATURES & OPTIONS



- | | |
|----------------|-------------------|
| 01. CW | 10. RAL9005 |
| 02. NW | 11. IP66 |
| 03. WW | 12. ANTI-SALINE |
| 04. DW | 13. POLAR |
| 05. RGB | 14. DMX |
| 06. RGBW | 15. RFU |
| 07. RAL9003 | 16. RDM |
| 08. GRMEN GREY | 17. WIRELESS DATA |
| 09. RAL7016 | |

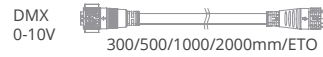
DIMENSIONS



Leader Cable



Jumper Cable



*all units are in mm

OPTIC SELECTION



LED	Lumens	Watts	Efficacy
WHITE	4607.88	64.00	72.00

CenterBeamLux	Illuminance at Distance
14218.96 lx	05.0 m
3554.74 lx	10.0 m
1579.88 lx	15.0 m
888.69 lx	20.0 m
568.76 lx	25.0 m
394.97 lx	30.0 m

■ Ver. Spread: 5.7° ■ Horiz. Spread: 5.7°



LED	Lumens	Watts	Efficacy
WHITE	4800.00	64.00	75.00

CenterBeamLux	Illuminance at Distance
1527.61 lx	05.0 m
381.90 lx	10.0 m
169.73 lx	15.0 m
95.48 lx	20.0 m
61.10 lx	25.0 m
42.43 lx	30.0 m

■ Ver. Spread: 6.5° ■ Horiz. Spread: 48.5°

3000K